

Sheave with Ball Bearings, Rigging

Product information



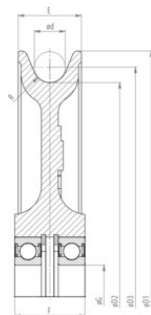
Self-lubricating cast sheaves are often applied in lifting, luffing and wire rope routing with intensive operating cycles. The groove opening angle was carefully designed to reduce potential twist resulting from fleet angles. In combination with the self-lubricating effect, the wire rope in your system will last longer. The latter was proved in recent research, in which several sheave materials were compared in terms of their effect on rope twist.

- Different shaft sizes possible.
- Groove may be adjusted to other wire rope diameters.

[... Read more](#)

Sheave with Ball Bearings, Rigging

Blueprint



Technical data

Part code	Rope Ø range mm	Material	Shaft Ø mm	Groove radius	Sheave dia. mm	Bearing	øD2 mm mm	øG mm mm	R mm	øD1 mm mm	øD3 mm mm	E mm	F mm	Weight kg
140100800233	8	GGG-60	15	4.5	100 / 80	2x6002- RS	80	15	4.5	100	88	18	20	0.7
140101000233	10	GGG-60	22	5.5	125 / 105	2x6022- RS	105	22	5.5	125	115	23	27.5	1.5
140101200233	12	GGG-60	30	6.5	150 / 120	2x6206- RS	120	30	6.5	150	132	36	40	3
140101400233	14	GGG-60	30	7.5	200 / 165	2x6206- RS	165	30	7.5	200	179	36	40	4.5
140101800233	18	GGG-60	35	9.5	250 / 210	2x6207- RS	210	35	9.5	250	228	40	45	8
140102000233	20	GGG-60	40	11	300 / 255	2x6208- RS	255	40	11	300	275	45	50	12
140102200233	22	GGG-70	45	12	350 / 305	2x6209- RS	305	45	12	350	327	45	50	17
140102400233	24	GGG-70	50	13	400 / 345	2x6210- RS	345	50	13	400	369	55	60	24