

Plate Hook Grade 10

Product information

For lifting sheet metal stacks and boards.

... [Read more](#)



Material: Alloy steel

Marking: Code and grade

Finish: Violet powder coated.

Note: Recommended angle β of inclination of the sling: 15-30°. To be used with 3 or 4 -leg chain sling.

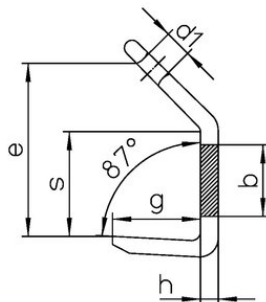
Warning: Not to be heat-treated

Safety factor: 4:1

Grade: 10

Plate Hook Grade 10

Blueprint



Technical data

| Part code | Code | WLL ton | EWL mm | b mm mm | d1 mm mm | e mm mm | g mm mm | h mm mm | s mm mm | Weight kg |
|--------------|------------|---------|--------|---------|----------|---------|---------|---------|---------|-----------|
| 402300250380 | BH/S-8-10 | 2.5 | 131 | 50 | 28 | 131 | 55 | 15 | 80 | 1.5 |
| 402300400380 | BH/S-10-10 | 4 | 170 | 70 | 36 | 170 | 65 | 20 | 100 | 2.8 |
| 402300670380 | BH/S-13-10 | 6.7 | 209 | 80 | 40 | 209 | 90 | 25 | 130 | 5.3 |
| 402301000380 | BH/S-16-10 | 10 | 263 | 100 | 50 | 263 | 110 | 30 | 160 | 10.5 |
| 402301900380 | BH/S-22-10 | 19 | 368 | 140 | 75 | 368 | 150 | 50 | 220 | 30.5 |