

## Closed Swage Socket Crosby S-502

---

### Product information



Sockets incorporate a reduced machined area of the shank which is the equivalent to the proper after swage dimension. Before swaging, this provides for an obvious visual difference in the shank diameter. After swaging, a uniform shank diameter is created allowing for a QUIC CHECK™ permanent visual inspection opportunity. Designed to quickly determine whether the socket has been through the swaging operation and assist in field inspections, it does not eliminate the need to perform standard production inspections which include gauging for the proper after swage dimensions or proof loading.

Hardness controlled by spheroidise annealing.

Swage socket terminations have an efficiency rating of 100% based on the catalogue strength of wire rope.

... [Read more](#)

---

**Material:** Carbon Steel.

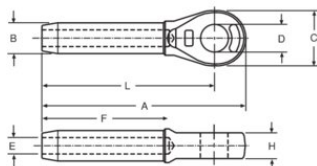
**Marking:** ID code and Manufacturer's symbol.

**Finish:** Ungalvanised.

**Safety factor:** 5:1

## Closed Swage Socket Crosby S-502

### Blueprint



### Technical data

Part code	Rope Ø range mm	Max. after swage dia mm	A mm	B mm	C mm	D, mm	E mm	F mm	H, mm	L mm	Weight kg
12071039325	6	11,7	109	12,7	35,1	19,1	6,85	54	12,7	89,0	0.15
12071039343	8	18,0	138	19,6	41,1	22,4	8,65	81	17	114	0.34
12071039361	9-10	18,0	138	19,6	41,1	22,4	10,4	81	17	114	0.33
12071039389	11-12	23,1	176	24,9	51,0	26,9	12,2	108	21,8	146	0.64
12071039405	13	23,1	176	24,9	51,0	26,9	14,0	108	21,8	146	0.64
12071039423	14	29,5	220	31,8	60,5	31,8	15,5	135	28,7	184	1.32
12071039441	16	29,5	220	31,8	60,5	32,5	17	135	28,7	184	1.29
12071039469	18-20	36,1	261	39,4	73	36,6	20,3	162	33,3	219	2.27
12071039487	22	39,4	303	43,2	79	44	23,9	189	38,1	257	3.08
12071039502	24-26	45,7	344	50,5	92	52,5	26,9	216	44,5	292	4.72
12071039520	28	52,0	382	57,0	102	58,5	30,2	243	51	324	6.72
12071039548	32	58,5	430	64,5	114	65	33,8	270	57	365	9.78
12071039566	33-34	65,0	473	71	127	65	36,8	297	57	400	12.9
12071039584	38-40	71,5	511	78	140	71,5	40,1	325	63	432	17.3
12071039600	44	77,5	598	86	159	90,5	47,2	378	76	508	23.1
12071042589	48-52	90,5	702	100	184	96,5	53,5	432	82,5	584	40.5