

Snatch Block McKissick 419 with Shackle - Light Champion

Product information



The McKissick snatch block 419 Light Champion from Crosby is a snatch block fitted with a shackle. Available from WLL 2 tons up to 15 tons. Can be delivered with bronze bushing (BB) and from WLL 8 T also with roller bearing (RB).

Features:

- Bolt for opening feature is retained, to ensure no lost bolts.
- Opening feature permits easy insertion of rope without reeving, or while the block is suspended.
- Center pin equipped with pressure lube fitting.
- All sizes feature sheave grooves suited for a range of wire line diameters.
- Meets or exceeds all requirements of ASME B30.26 including identification ductility, design factor, proof load and temperature requirements.
- Meet other critical performance requirements including fatigue life and material traceability, not addressed by ASME B30.26.

[... Read more](#)

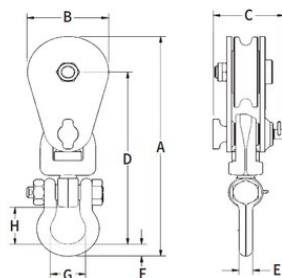
Material: Forged steel.

Marking: CE-marked

Safety factor: 4:1

Snatch Block McKissick 419 with Shackle - Light Champion

Blueprint



Technical data

Part code	Code	Rope Ø range mm	WLL ton	Sheave dia mm	Bearing	A mm	B mm	C mm	D mm	E mm	F mm	G mm	H mm	Weight kg
424100200200	419 w/eye	8-10	2	76	BB	220	76	67	168	14	14	35	35	1.8
424100200205	419	8-10	2	76	BB	235	76	67	185	13	13	34	40	2.3
424100400200	419	10-13	4	114	BB	340	108	79	268	16	18	43	51	5.4
424100800200	419	16-19	8	152	BB	481	152	106	373	32	32	76	88	12.7
424100800205	419	16-19	8	152	RB	481	152	106	373	32	32	76	88	12.7
424100800206	419	16-19	8	203	BB	533	206	106	398	32	32	76	88	15
424100800207	419	16-19	8	203	RB	533	206	106	398	32	32	76	88	15
424100800208	419	16-19	8	254	BB	586	257	106	425	32	32	76	88	19.5
424100800209	419	16-19	8	254	RB	586	257	106	425	32	32	76	88	19.5
424100800201	419	16-19	8	305	BB	657	308	106	471	32	32	76	88	24.9
424100800204	419	16-19	8	305	RB	657	308	106	471	32	32	76	88	24.9
424100800203	419	16-19	8	356	BB	695	359	106	484	32	32	76	88	30.4
424101500200	419	19-22	15	406	BB	806	409	129	559	38	44	79	79	59
424101500205	419	19-22	15	406	RB	806	409	129	559	38	44	79	79	59
424101500206	419	22-26	15	457	BB	841	460	129	565	38	44	79	79	72.1
424101500207	419	22-26	15	457	RB	841	460	129	565	38	44	79	79	72.1