

REMA MAS electric trolley

Product information



REMA[®]

This trolley is only available in combination with an FAH / FBH electric hoist 400V.

Properties

- Single axle design.
- 1 driving speed.
- Wheel rupture supports and anti-surge devices.
- Including 24V push-button box with emergency stop.
- Simple plug connection.

Technical properties

- Driving speed 10 m/min
- Operating voltage: 400V
- Control voltage: 24V
- Protection class: IP54
- Duty cycle 120 sw/h ED 30%
- isolation class: E
- Motor power 0.4 kW

... [Read more](#)

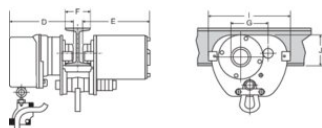
Marking: According to standard, CE-marked

Standard: EN 12100, EN 13157

Warning: Always specify flange width in mm.

REMA MAS electric trolley

Blueprint



Technical data

Part code	GTIN No.	WLL ton	Beam width mm	Model	Minimum radius mm	D mm	E mm	F mm	G mm	I mm	J mm	Weight kg
R0920001	8717365003028	0.5	75-125	MAS-0.5-75/125	1,100	228	248	75-125	120	242	102	31
R0920001-2	8717365165184	0.5	130-240	MAS-0.5-130/210	1,100	228	248	130-240	120	242	102	31
R0920001-3	8717365165191	0.5	215-300	MAS-0.5-215/300	1,100	228	248	215-300	120	242	102	31
R0920003	8717365003035	1	75-125	MAS-1.0-75/125	1,100	228	248	75-125	120	242	102	31
R0920003-2	8717365165207	1	130-210	MAS-1.0-130/210	1,100	228	248	130-210	120	242	102	31
R0920003-3	8717365165221	1	215-300	MAS-1.0-215-300	1,100	228	248	215-300	120	242	102	31
R0920005	8717365003042	2	100-150	MAS-2.0-100/150	1,500	245	265	100-150	148	288	120	40
R0920005-2	8717365165238	2	150-240	MAS-2.0-150/240	1,500	245	265	150-240	148	288	120	40
R0920005-3	8717365165245	2	240-300	MAS-2.0-240/300	1,500	245	265	240-300	148	288	120	40
R0920007	8717365003059	3	100-150	MAS-3.0-100/150	1,500	234	318	100-150	117	310	154	64
R0920007-2	8717365165252	3	160-230	MAS-3.0-160/230	1,500	234	318	160-230	117	310	154	64
R0920007-3	8717365165269	3	230-290	MAS-3.0-230/290	1,500	234	318	230-290	117	310	154	64