

GHB trestles

Product information



REMA[®]

Properties

- Ideally combines with a hydraulic scissors jack
- Robust construction
- 3 height adjustments
- Available exclusively in pairs

... [Read more](#)

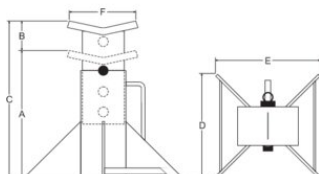
Marking: According to standard, CE-marked

Standard: EN 12100

Warning: 12T / pair

GHB trestles

Blueprint



Technical data

Part code	GTIN No.	WLL ton	Model	A mm	B mm	C mm	D, mm	E mm	F mm	Weight kg
R4261030	8717365180897	12	GHB-6	242	55	425	220	220	110	15