

Eye Nut C802

Product information



Eye nut to be screwed by hand.

... [Read more](#)

Material: Alloy steel 8.8.

Marking: Marked with WLL, sizes, steel quality, CE, producername, tracability.

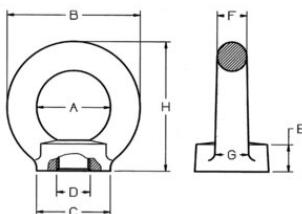
Finish: Red painted.

Note: Approved for lifting.

Safety factor: 4:1

Eye Nut C802

Blueprint



Technical data

Part code	WLL ton	Thread mm	A mm	B mm	C mm	E mm	F mm	H mm	Weight kg
421100040120	0.4	M6	25	45	25	10	10	45	0.1
421100080120	0.8	M8	25	45	25	10	10	45	0.1
421100100120	1	M10	25	45	25	10	10	45	0.1
421100160120	1.6	M12	35	63	35	14	14	62	0.26
421100300120	3	M14	35	63	35	14	14	62	0.26
421100400120	4	M16	35	63	35	14	14	62	0.26
421100600120	6	M20	50	90	50	20	20	90	0.75
421100800120	8	M24	50	90	50	20	20	90	0.75
421101200120	12	M30	60	108	65	24	24	109	1.4