

Superclamp S serial with swivel jaw

Product information



Adjustable spindle beam clamp for establishing a semi-permanent suspension point on angle steels.

Properties

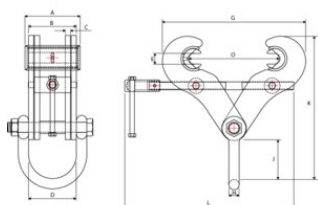
- Robust design.
- Wide jaw openings.
- Easy mounting.

... [Read more](#)

Marking: According to standard, CE-marked
Standard: EN 12100, EN 13157

Superclamp S serial with swivel jaw

Blueprint



Technical data

Part code	Code	WLL ton	Beam width mm	Model	A mm	B mm	C mm	D mm	E mm	G mm	H mm	J mm	K mm	L mm	Weight kg
502300303050280	8717365016837	3	89-305	S5	134	93	6	95	25.4	348	20	102	359	410	10
502300303050280	8717365016844	3	89-305	S5A	134	116	10	116	25.4	348	25	110	375	410	13.8
502300503050280	8717365020407	5	89-305	S6	134	116	10	116	25.4	348	25	110	375	410	13.8
502300503050280	8717365016851	5	89-305	S6A	134	116	12.5	116	25.4	348	25	110	375	410	15.2
502301003050280	8717365016868	10	89-305	S11	134	116	20	118	25.4	348	32	112	391	410	20.6