

## RAC eye shortening grabhook AISI (G6)

### Product information



## CARTEC

Grade 6 Stainless Steel Chain Slings and components are meticulously crafted using top-tier stainless steel (AISI 316), our slings are not just durable but also versatile. With the availability of individual components, we ensure a sustainable and customizable solution tailored to your specific lifting requirements. Our stainless steel assemblies are trusted across a myriad of industries such as construction, food & beverage, healthcare, aerospace, marine, and beyond.

### Utilization Features:

1. **Durability:** Made with premium AISI 316 stainless steel, ensuring longevity and resistance to corrosion.
2. **Versatility:** Suitable for a range of lifting operations with various assembly options.
3. **Safety:** Comes with a CE-mark and a safety factor of 4, ensuring utmost safety during operations.
4. **Adaptability:** Individual component availability for a tailored lifting solution.

### Markets/Applications:

- **Construction:** Ideal for heavy-duty lifting and construction site operations.
- **Food & Beverage:** Stainless steel ensures hygiene and cleanliness, making it perfect for food-related lifting tasks.
- **Medical:** Suitable for lifting medical equipment and supplies.
- **Aerospace:** Can be used for lifting aerospace components.
- **Marine:** Resistant to corrosion, making it perfect for marine applications. [... Read more](#)

**Material:** AISI 316

**Marking:** According to standard, CE-marked

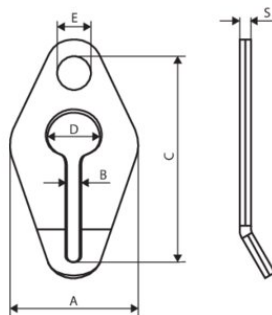
**Standard:** EN 818-4

**Safety factor:** 4

**Grade:** 6

## RAC eye shortening grabhook AISI (G6)

### Blueprint



### Technical data

Part code	Code	WLL ton	Size	Model	A mm	B mm	C mm	D, mm	E mm	S mm	Weight kg
400300090070	8717365176883	0.9	6/5	RAC06-6/5	55	8	81	26	16	8,5	0.22
400300160070	8717365176890	1.6	8/7	RAC08-8/7	71	11	110	34	22	10,5	0.57
400300250070	8717365176906	2.5	10	RAC10-10	90	12	135	40	26	13	1.06
400300430070	8717365176913	4.25	13	RAC13-13	112	17	170	52	32	16,5	2.2