

## WCL webbing connecting link (Grade 10)

---

### Product information



**Marking:** According to standard, CE-marked

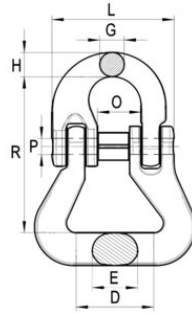
**Standard:** EN 1677-1, EN 818, DIN 17115

**Safety factor:** 4

**Grade:** 10

## WCL webbing connecting link (Grade 10)

### Blueprint



### Technical data

Part code	Code	WLL	Size	Model	D mm	E mm	G mm	H mm	O mm	R mm	P x L (mm) mm	Weight
402300251020	8717365177774	2.5	8	WCL-8	30	18	10	11,5	18	66	6,3 x 53	0.3
402300401020	8717365177781	4	10	WCL-10	40	22	12,6	12,6	22,5	81	8 x 63	0.6
402300671020	8717365177798	6.7	13	WCL-13	50	27,5	16,7	19	27,5	104	10 x 79	1.1