

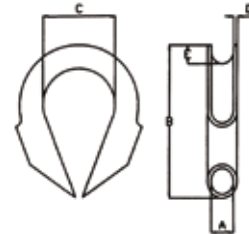
Rohrkausche / Wire Rope Thimble



Stark verzinkt, die Kausche bietet dem Drahtseil zusätzlichen Schutz.

Strong galvanized thimble that provides the wire rope extra protection.

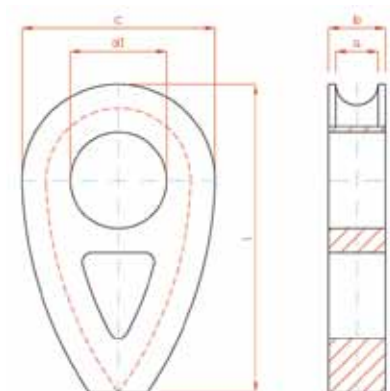
Art. Nr.	Typ	A mm	B mm	C mm	D mm	E mm	Gewicht kg
01-4019012	VT 212	12	90	23	4,0	8	0,25
01-4019015	VT 215	15	105	27	5,0	10	0,42
01-4019017	VT 217	17	115	27	4,0	10	0,40
01-4019019	VT 219	19	120	32	6,5	12	0,81
01-4019022	VT 222	22	140	35	6,0	15	0,91
01-4019025	VT 225	25	180	45	7,5	16	2,00
01-4019030	VT 230	30	195	47	7,0	18	2,20
01-4019035	VT 235	35	215	60	7,0	22	2,60



Vollkauschen DIN 3091

Thimble DIN 3091

Art. Nr.	Nenngröße = Seil-durchmesser	a	b	Grenzabmaße Rohmaß für a und b	Fertigmaß d1 bis	c	l	Gewicht kg
9148000	8	9	15,00	+/- 0,4	14	20	66	0,18
9148001	10	11	17,50	+/- 0,4	18	25	82	0,32
9148002	12	13	20,00	+/- 0,4	21	30	98	0,52
9148003	14	16	23,50	+/- 0,4	25	35	114	0,80
9148004	16	18	26,00	+/- 0,6	28	40	130	0,90
9148005	18	20	28,50	+/- 0,6	31	45	145	1,21
9148006	20	22	31,00	+/- 0,6	35	50	161	1,61
9148007	22	24	33,50	+/- 0,6	38	55	177	2,11
9148008	24	26	36,00	+/- 0,8	41	60	193	2,71
9148009	26	29	39,50	+/- 0,8	44	65	209	3,55
9149000	28	31	42,00	+/- 0,8	47	70	224	4,20
9149001	32	35	47,00	+/- 0,8	53	80	256	6,30
9149002	36	40	53,00	+/- 1,0	59	90	288	8,84
9149003	40	44	58,00	+/- 1,0	65	100	320	11,00
9149004	44	48	63,00	+/- 1,0	70	110	352	15,00
9149005	48	53	69,00	+/- 1,0	76	120	384	20,00
9149006	52	57	74,00	+/- 1,5	81	130	416	25,00
9149007	56	62	80,00	+/- 1,5	86	140	448	32,00
9149008	64	70	90,00	+/- 1,5	95	160	512	46,00
9149009	72	79	101,00	+/- 2,0	104	180	576	66,00
9150000	80	88	112,00	+/- 2,0	112	200	640	90,00

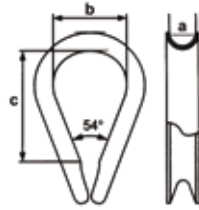


Alle Angaben in mm

All measurements in mm



Drahtseilkausche, verzinkt / Galv. Thimble



Ähnlich DIN 6899B.

According to DIN 6899B.

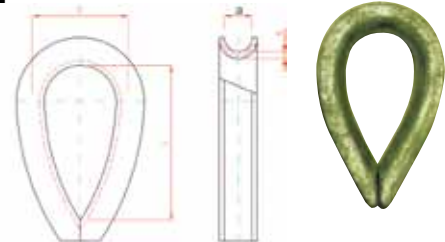
Auch in verstärkter Ausgabe

Art. Nr.	Größe (mm)	a (mm)	b (mm)	c (mm)
01-4011002	2.5x3	3	12	19
01-4011003	3.5x4	4	13	21
01-4011004	4x5	5	14	23
01-4011005	5x6	6	16	25
01-4011006	6x7	7	18	28
01-4011007	7x8	8	20	32
01-4011008	9x10	10	24	38
01-4011010	11x12	12	28	45
01-4011011	12x13	13	30	48
01-4011012	13x14	14	32	51
01-4011014	15x16	16	36	58
01-4011016	16x18	18	40	64
01-4011018	18x20	20	45	72
01-4011020	20x22	22	50	80
01-4011022	22x24	24	56	90
01-4011024	24x26	26	62	99
01-4011026	26x28	28	70	112
01-4011029	29x30	30	75	120
01-4011030	30x32	32	80	128
01-4011032	32x34	34	95	152
01-4011034	34x36	36	100	160
01-4011036	36x38	38	110	176

Drahtseile & Zubehör

Kauschen

Kausche DIN 13411-1 / Thimble DIN 13411-1



Iht. DIN 13411-1 (3090).

According to DIN 13411-1 (3090).

Art. Nr.	Größe (mm)	a (mm)	C (mm)	l (mm)	s (mm)	Gewicht 100 Stck./kg
01-4011104	4	5	10	20	2,1	1,4
01-4011106	6	7	15	30	2,6	3,0
01-4011108	8	9	20	40	4,0	7,1
01-4011110	10	11	25	50	5,0	17
01-4011112	12	13	30	60	6,0	24
01-4011114	14	16	35	70	8,0	36
01-4011116	16	18	40	70	8,0	50
01-4011118	18	20	45	90	9,0	62
01-4011120	20	22	50	100	10,0	90
01-4011122	22	24	55	110	10,0	100
01-4011124	24	26	60	120	10,0	130
01-4011126	26	29	65	130	12,0	220
01-4011128	28	31	70	140	12,0	240
01-4011132	32	35	80	160	15,0	270
01-4011136	36	40	90	180	15,0	430
01-4011140	40	44	100	200	20,0	570
01-4011144	44	48	110	220	20,0	850
01-4011148	48	53	120	240	20,0	1.120
01-4011152	52	57	130	260	25,0	1.530
01-4011156	56	62	140	280	25,0	2.148
01-4011160	60	66	150	300	25,0	2.300
01-4011164	64	70	160	320	30,0	3.500
01-4011168	68	75	170	340	30,0	3.700
01-4011172	72	79	180	360	30,0	4.100
01-4011176	76	84	190	380	30,0	4.600
01-4011180	80	88	200	400	30,0	5.400

